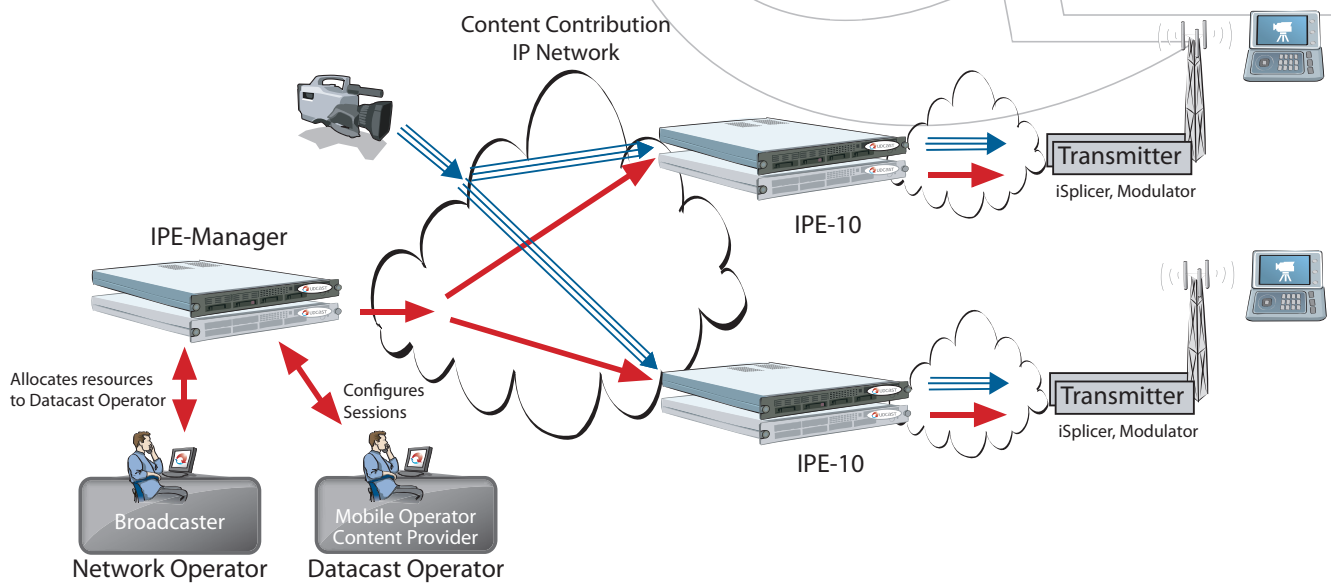


DVB-H/DVB-SH IPE-Manager

Mobile TV Network Management for Operators and Broadcasters



DESCRIPTION

Mobile television using DVB-H and DVB-SH networks is set to become a major revenue generator. However its success is reliant on its scalability and in particular the ability to efficiently control and manage several dozen or even hundreds of IP Encapsulators distributed throughout the DVB-H or DVB-SH network. UDcast's IPE Manager responds to this need complementing its fully DVB-H and DVB-SH compliant IPEs with a complete end-to-end management and administration system.

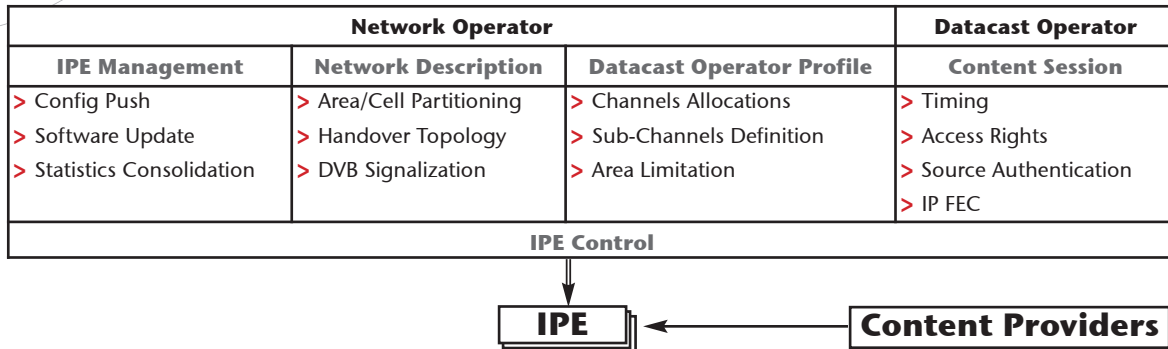
The IPE-Manager enables the complete control of the IP encapsulation points distributed throughout the network. It enables the overall coherence of the network for the DVB-H or DVB-SH transmission, bandwidth management and the sharing of infrastructure. The Network Operator controls its infrastructure via the IPE-Manager, defining a specific environment for each Datacast Operator (eg. mobile service providers) which will in turn interact with multiple content providers. Through the use of the IPE-Manager the definition of a content session is realised in one operation with the administration tool updating the multiple parameters of the deployed IPEs throughout the network.

In addition to the hierarchical management of the QoS, the IPE-Manager is critical to key DVB-H and DVB-SH networks functionalities such as the handover between different cells as well as the global and local description of the transmission network enabling mobile reception devices to auto configure in order to tune into the relevant channel.

The IPE-Manager also ensures that encryption keys to secure IP content are distributed to the IPEs and that traffic is dynamically routed to the DVB-H or DVB-SH cell during time segments set by the Datacast Operator.

Within such a complex environment it is vital that all the administration parameters for all the IPEs in the network are coherent and synchronised. This is essential for a functional and reliable network meeting the multiple needs of the various players. Indispensable for a fully operational network, the IPE-Manager is the essential management tool for a DVB-H or DVB-SH network bringing it the intelligence and flexibility needed for the delivery of a cutting edge service.

DVB-H IPE-Manager



FEATURES & BENEFITS

> DVB-H and DVB-SH infrastructure control

- Network model based on cells and areas to support local content
- Homogeneous global network definition with local PSI/SI table generation
- Global and local session definition with adapted PSI/SI information

> Strict global service model

- Hierarchical value-chain model tailored for Network Operator - Datacast Operators - Content Provider
- Delivers strong mutualization and high scalability of the global infrastructure

> Specific IP traffic control

- Global phase shift within time slicing to deliver seamless hand over
- Predictable content delivery behaviour, including multicast transit delay processing and IP FEC
- Strict content diffusion control based on time slot session and originator authentication

> IPE network management

- IPE software upgrade synchronization to guarantee uniform IP/DVB-H/DVB-SH processing
- Central configuration management (up to 100 IPEs per unit)
- Global IPE statistics aggregation into a central location
- Remote configuration of transmitter sites (iSplicers and modulators/transmitters)

> Secured management

- Encrypted SNMP-based management with limited view per Datacast Operator
- Multicast IPsec-based encrypted Manager to IPE dialog, including reliable configuration push
- Strong IPE authentication based on digital certificates

> High availability

- Cluster with 2 hot-swappable IPE-Manager
- Automatic switch on failover
- Transparent and easy migration to cluster



DVB-H/DVB-SH IPE-Manager

SPECIFICATIONS

Hardware specifications

- Casing: 19" x 1U x 705 mm
- Weight: 16.7 kg
- Power supply: Redundant dual supply, 110/240 VAC
- Optional: High availability cluster redundancy (1+1)
- Redundant hot-swappable hard-drives

Network interfaces

- Ethernet 3x 10/100 base-T NIC
- I/O connectors: standard connectors for display, PS/2 keyboard, 2 serial slots